



HKIQEP Accreditation Scheme

Information for Postgraduate Programmes

Version 1.0 – 5 February 2025

Contents

1. Introduction
2. HKIQEP Accreditation Scheme
3. Accreditation Requirements - Postgraduate Programmes
4. Glossary

1. Introduction

Introduction

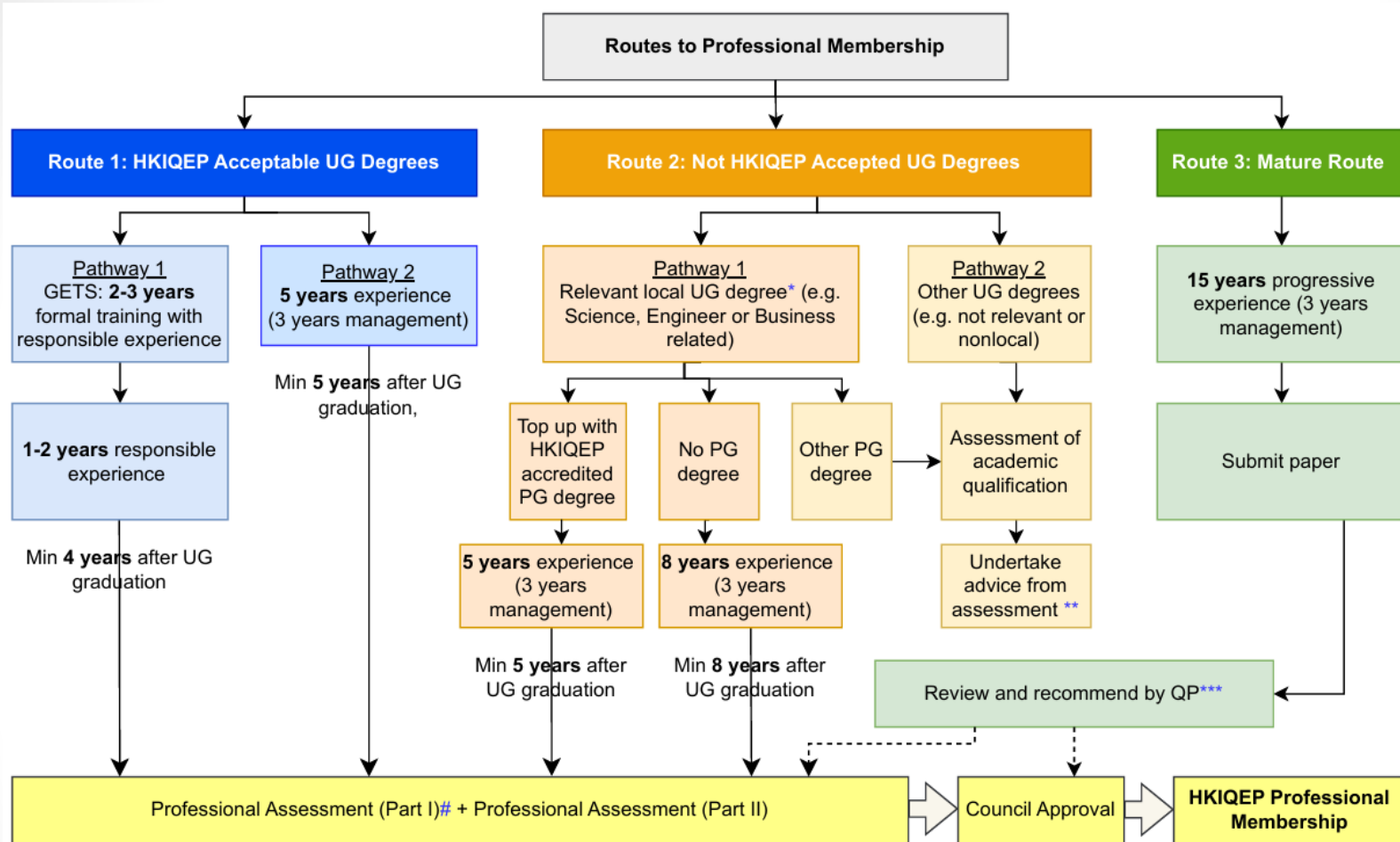
HKIQEP

- Established in 2015
- To develop and raise the standards of environmental professionals with a view to promoting Hong Kong as the Centre of Excellence in environmental services

HKIQEP Accreditation Scheme

- Developed in 2020
- To encourage institutions to provide environmental degree programmes with appropriate breadth in fundamental environmental principles and depth in specific areas
- To forge better collaboration between academic and practicing environmental professionals

Routes to HKIQEP Professional Membership



Remarks:

Can be taken anytime but is valid for 60 months only.

* For degrees to be considered relevant, they must contain training in analytical methods, multi-disciplinary collaboration, problem solving, effective communication and life-long learning.

** Advice from the assessment may include: (1) directly pursue an established path; or (2) complete additional courses or gain more work experience before pursuing an established path.

*** Recommendations from QP after review of the submitted paper may include: (1) complete the process starting with Professional Assessment (Part I); (2) waive Part I and allow the candidate to proceed directly to Part II; or (3) in exceptional case submit for approval by the HKIQEP General Council.

2. HKIQEP Accreditation Scheme

Basic Information

Eligibility

- All environmental degree programmes at the postgraduate level may apply for accreditation under this scheme

Categories of Accreditation

- Two categories
 - 1. Provisional***: For Programmes which are under development and have not yet had the first cohort of graduates
 - 2. Full**: For existing or new Programmes with at least a first cohort of graduates

** All Programmes granted Provisional Accreditation must convert to Full Accreditation at the next accreditation cycle*



3. Accreditation Requirements – Postgraduate Programmes

Accreditation Requirements – Postgraduate Programmes

- This is a summary of the HKIQEP Accreditation Scheme requirements for Postgraduate Programmes
- Details of the requirements will be provided to Programmes after application is received

Expected Programme Outcomes

1. Apply knowledge in fundamental areas in environmental science and environmental management
2. Apply appropriate breadth and depth in specific areas related to environment
3. Work independently as well as in a group environment, as a leader or member, to tackle environmental problems
4. Communicate effectively both verbally and in writing
5. Recognize personal needs and engage in life-long development
6. Adhere to professional and ethical responsibilities

Composition of Scheme

The Accreditation Scheme is composed of SIX aspects:

- I. Programme Design
- II. Staffing
- III. Resources
- IV. Students
- V. Programme Quality Assurance
- VI. Programme Development and Sustainability

I. Programme Design

- Define adequate aims and objectives to meet
 - Programme intended learning outcomes and course outcomes
 - HKIQEP Accreditation Scheme expected programme outcomes
- Have an appropriate plan to deliver the Programme objectives and outcomes by considering the detailed curriculum, and teaching and learning strategies

I. Programme Design – Fundamental Areas

- This is a mandatory requirement
- Fundamental knowledge in TWO areas:
 1. Environmental Science
 2. Environmental Management
- Refer to the HKIQEP Syllabus* for the subjects included in the fundamental areas
 - Recommend to include additional topics not listed in the HKIQEP Syllabus
- **MUST** demonstrate **core** courses have adequate coverage of the fundamental areas in terms of
 - Contact hours
 - Teaching and learning strategies
 - Assessment methods
 - Hours spent in practical work and training
 - Expertise and qualification of academic staff to deliver the courses

** The HKIQEP Syllabus will be reviewed and amended from time to time and the Institution is advised to ensure the latest version is being referenced*



I. Programme Design – Specific Areas

- Required to cover at least TWO of the following specific areas:
 1. Environmental Policy and Legislations
 2. Sustainability
 3. Air
 4. Environmental Impact Assessment and Health Impact Assessment (EIA & HA)
 5. Noise
 6. Waste
 7. Water
- Recommend to also include additional areas that are not listed in the HKIQEP Syllabus
- Refer to the HKIQEP Syllabus* for the subjects included under each area

Note: The number of specific areas granted to a Programme is subject to the Institution's submission and evidence showing sufficient coverage as determined by the Visiting Team

* The HKIQEP Syllabus will be reviewed and amended from time to time and the Institution is advised to ensure the latest version is being referenced

Copyright ©2025 Hong Kong Institute of Qualified Environmental Professionals Limited All Rights Reserved.

I. Programme Design – Complementary Skills Training

- Complementary skills training should be provided to prepare students for lifelong learning, multi-disciplinary collaboration, professional ethics and conduct, and effective communication. The training includes, but is not limited to, the following:
 - Initiatives to recognize personal needs and engage in lifelong development (e.g., mentoring programs, online resources, career-sharing platforms)
 - Provisions to equip students with knowledge across multiple disciplines and the ability to collaborate effectively in multi-disciplinary teams.
 - English as the medium of instruction for teaching and learning, along with training in comprehensive communication skills (e.g., outward-facing communication, sensitivity to listening carefully, and awareness to adapt and respond to stakeholders)
 - Training on adherence to professional and ethical responsibilities (e.g., courses on conduct and ethics)

II. Staffing

- Assign appropriate personnel at management level
- Optimize composition of academic staff to ensure Programme objectives and outcomes are met
 - Staff to student ratio of the Programme should be sufficient
 - Quality and commitment of academic staff as demonstrated through the range of expertise, qualification and experience, as well as their involvements in research publications, consultancy work and scholarly activities
 - Engage guest lecturers with industry experience in teaching
- Assign sufficient office/administration and support staff with appropriate qualification and experience

III. Resources

- Ensure the Programme has sufficient finance provisions (including financial situation and/or budget allocation) and other resources to support Programme operations, meet Programme outcomes in teaching and learning, and ensure programme development and sustainability

IV. Students

- The following will be reviewed
 - Entry requirements
 - Qualification of intake students
 - Academic award arrangements
 - Graduate employment statistics
 - Employer perceptions
- Encourage students to engage with environmental professionals where they can participate in relevant events and activities to enhance their competencies

V. Programme Quality Assurance

- Have in place sufficient and effective internal and external quality assurance (QA) systems (e.g. international advisory committees and external examiners) in term of committees and methods
 - Internal QA: to review and evaluate the programme outcomes and other aspects relating to the programme
 - External QA: to maintain academic standards with reference to local and international benchmarks
- Implement improvement actions after internal and external QA system assessments

VI. Programme Development and Sustainability

- Continuously develop and improve the Programme to ensure it meets local and international professional and academic standards as well as local and global needs
 - Make institutional policies and resources available to provide support for academic staff to ensure their continued teaching competence and professional development
- Demonstrate the Programme's integration with the profession and industry, and how it responds to the latest local and international standards and requirements

4. Glossary

Glossary of Relevant Terminology

- Accreditation Scheme – The HKIQEP scheme under which environmental programmes of academic institutions may submit application towards
- Accreditation Visit – Onsite review of relevant documentation and records, and conduct interviews with relevant personnel of the Programme
- Contact Person – The main contact from the Programme who handles all communication matters with the Panel
- HKIQEP – Hong Kong Institute of Qualified Environmental Professionals
- HKIQEP Syllabus – The syllabus for HKIQEP Professional Assessment (Part I)
- Institution – The academic institution applying for HKIQEP Accreditation
- Panel – HKIQEP Accreditation Panel
- Programme – The academic programme applying for HKIQEP Accreditation
- Secretariat – HKIQEP Secretariat staff responsible for the operation of the Accreditation Scheme
- Submission – The packet of documents submitted by the Programme in response to the submission instructions, forms, and templates provided by the Panel
- Visiting Team – The team appointed by the Panel to carry out the Accreditation Visit